



## MODEL 2420 RATIO STATION MODULE

... Provides ease of use and flexibility in chemical feed systems.

### FEATURES

- Provides precision control over the process.
- Competitively priced.
- Parallel indicating vertical edge meters allow direct comparison between input and output.
- Digital thumbwheels provide for accurate set points.

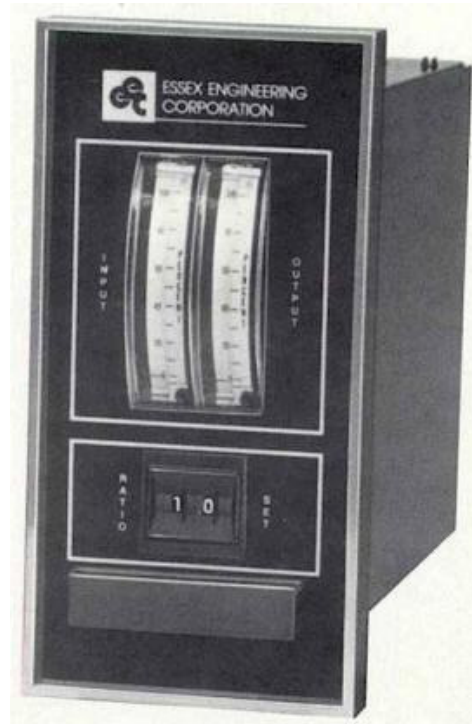
### DESCRIPTION

The Essex Engineering Model 2420 Ratio Station Module is a ratio controller that allows the precise ratioing of input and output signals on a continuous basis. It is designed to be used in water treatment plants and in the chemical processing industry. It offers the ability to control such items as chemical feed equipment, paced from flow, pressure or other type signals, by a multiplication factor of 0.1 to 3.9 times the input level.

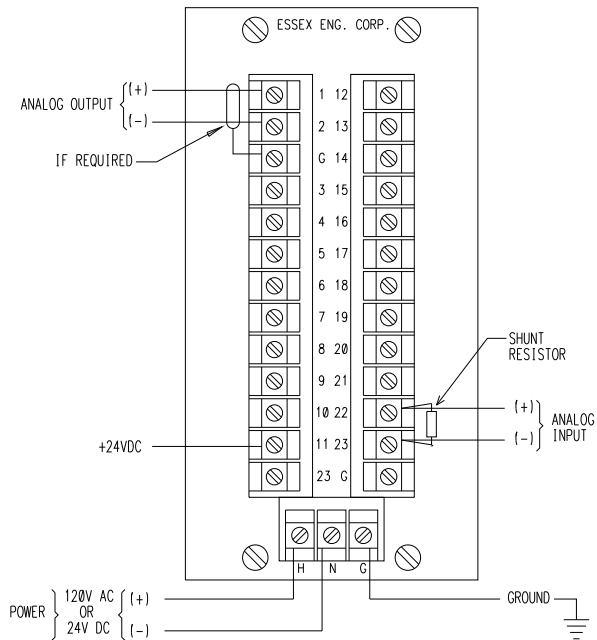
Standard indication of the ratios is by means of two 3 1/2" vertical edge meters, calibrated 0-100%. Custom scales are available for special applications.

Both the standard input and output signals are 4-20 mADC, with the ratio being selected by means of two digital thumbwheels. The ratio range is 0.1 to 3.9, selected in 0.1 step increments, with the accuracy being 0.2% of span.

The Model 2420 Ratio Station is designed to be used with the other units in the Essex 2400 series controllers, although it is feasible to incorporate the unit with controllers of other manufacture. Consult the factory for proper application and/or special inputs, outputs and scales.



## ELECTRICAL CONNECTIONS



## MODEL 2420 SPECIFICATIONS

**AMBIENT OPERATING TEMPERATURE RANGE**  
0 to 40 °C

### POWER INPUT

120 VAC  $\pm$  10% 15W max.  
24 VDC  $\pm$  10% 650 mADC max.  
12 VDC  $\pm$  10% 1200 mADC max.

### ANALOG INPUTS

4-20 mADC @ 250 $\Omega$  impedance  
1-5 VDC @ 470K $\Omega$  impedance  
Factory specials

### ANALOG OUTPUTS

4-20mADC @ 0-800 $\Omega$  LOAD  
Optional: Isolated 4-20mADC @ 0-800 $\Omega$  LOAD

### STANDARD INDICATORS

3 1/2" vertical edge input meter; 0-100% scale  
3 1/2" vertical edge output meter; 0-100% scale

### REPEATABILITY AND ACCURACY

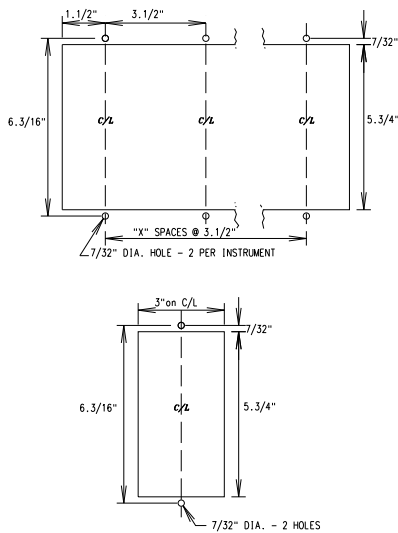
0.2% of span

### RATIO SETPOINT

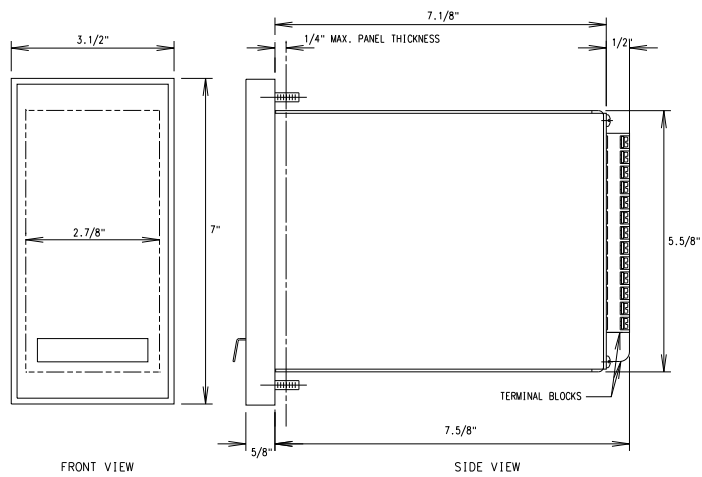
0.1 to 3.9 - Set by two digit thumbwheel switches in 0.1 increments

### AVAILABLE OPTIONS

Consult factory



## CUTOUT DIMENSIONS



## OVERALL DIMENSIONS

REPRESENTED BY



**ESSEX ENGINEERING CORPORATION**

21 Industrial Drive • Ivyland, PA 18974 • 215-322-5880 • FAX 215-322-8368 • www.essexeng.com